

Version 1.0 December 5, 2005

ZR047 Fecundity and Mortality Report (continued)

Group Fecundity, Mortality, Import, Export Rates

Restricted to:

Dates: DD/MM/YY to DD/MM/YY

Geographic Area: North American AZA members

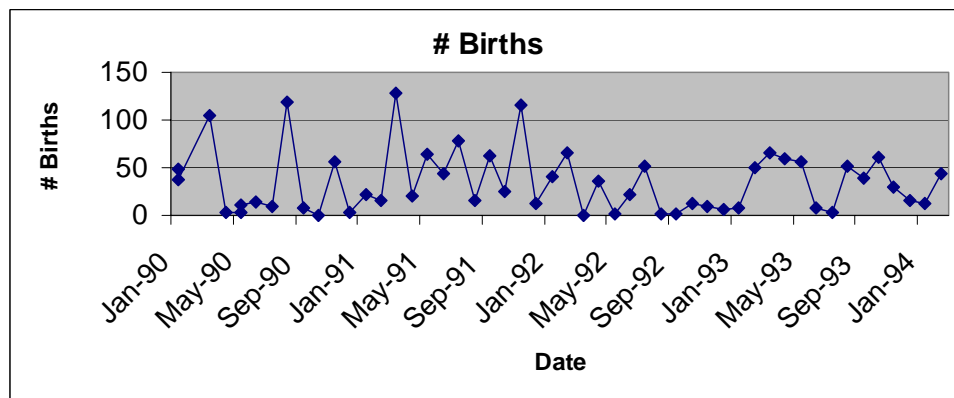
Other filters: Life-stage, generation, etc.

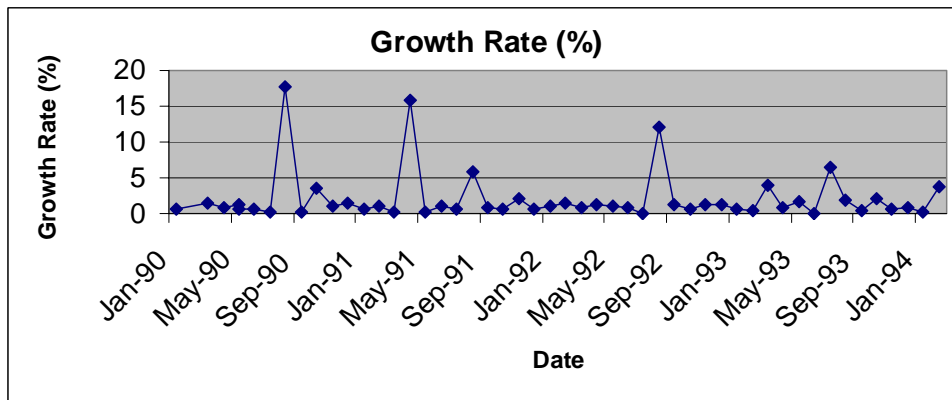
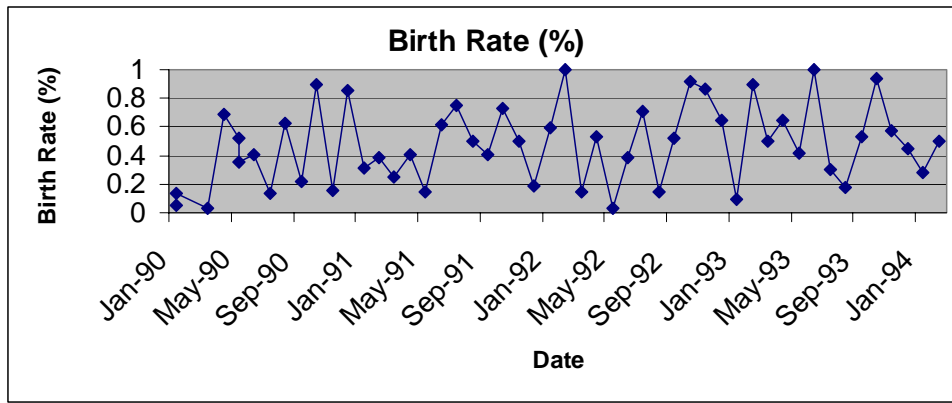
User selection options: (list of groups included, Males, Females, Life-stage)

User has the option of plotting following data:

- # Births
- Birth Rate (# Births/Census size)
- # Deaths
- Death rate (# Deaths/Census size)
- # Imports
- Import rate (# Imports/Census size)
- # Exports
- Export rate (# Exports/Census size)
- Growth rate (This census/Previous census)

Example lay-outs of graphs shown below:





Example lay-out of Data in data tables (Is this duplicated from Census??)

Date	N	Births	Deaths	Imports	Exports	Birth Rate	Lambda
1/1/1990	102	98	71	2	5	0.960784	
1/31/1990	70	32	39	3	65	0.457143	0.686275
3/2/1990	106	9	47	37	3	0.084906	1.514286
4/1/1990	80	7	76	35	0	0.0875	0.754717
5/1/1990	94	74	50	55	3	0.787234	1.175
5/31/1990	53	25	9	1	28	0.471698	0.56383
6/30/1990	38	32	4	18	6	0.842105	0.716981
7/30/1990	5	0	1	0	2	0	0.131579
8/29/1990	89	89	75	77	53	1	17.8
9/28/1990	19	15	14	0	0	0.789474	0.213483
10/28/1990	66	61	21	23	12	0.924242	3.473684
11/27/1990	75	15	28	45	1	0.2	1.136364
12/27/1990	107	45	26	12	45	0.420561	1.426667
1/26/1991	66	59	18	5	30	0.893939	0.616822
2/25/1991	72	52	6	24	21	0.722222	1.090909
3/27/1991	9	8	7	2	2	0.888889	0.125
4/26/1991	142	133	16	52	17	0.93662	15.77778

5/26/1991	32	11	32	16	29	0.34375	0.225352
6/25/1991	31	25	3	20	23	0.806452	0.96875
7/25/1991	22	19	5	6	4	0.863636	0.709677
8/24/1991	128	92	82	117	12	0.71875	5.818182
9/23/1991	103	100	18	82	9	0.970874	0.804688
10/23/1991	67	1	3	52	35	0.014925	0.650485
11/22/1991	143	95	39	64	64	0.664336	2.134328
12/22/1991	84	46	28	47	74	0.547619	0.587413
1/21/1992	95	41	32	35	52	0.431579	1.130952
2/20/1992	141	98	104	43	52	0.695035	1.484211
3/21/1992	106	85	64	67	42	0.801887	0.751773
4/20/1992	133	132	97	102	115	0.992481	1.254717
5/20/1992	138	94	83	130	35	0.681159	1.037594
6/19/1992	123	109	88	32	80	0.886179	0.891304
7/19/1992	8	7	8	0	0	0.875	0.065041
8/18/1992	96	86	60	10	0	0.895833	12
9/17/1992	130	85	98	41	124	0.653846	1.354167
10/17/1992	81	3	16	44	19	0.037037	0.623077
11/16/1992	102	21	81	64	19	0.205882	1.259259
12/16/1992	121	29	13	110	10	0.239669	1.186275
1/15/1993	65	9	0	31	29	0.138462	0.53719
2/14/1993	25	10	11	18	1	0.4	0.384615
3/16/1993	98	35	64	12	10	0.357143	3.92
4/15/1993	76	40	1	63	30	0.526316	0.77551
5/15/1993	123	95	103	70	0	0.772358	1.618421
6/14/1993	10	6	7	7	5	0.6	0.081301
7/14/1993	65	3	41	12	13	0.046154	6.5
8/13/1993	122	35	100	39	41	0.286885	1.876923
9/12/1993	43	11	41	28	20	0.255814	0.352459
10/12/1993	89	65	39	30	63	0.730337	2.069767
11/11/1993	57	50	6	38	13	0.877193	0.640449
12/11/1993	51	48	18	22	23	0.941176	0.894737
1/10/1994	9	5	1	8	4	0.555556	0.176471
2/9/1994	33	1	21	12	3	0.030303	3.666667